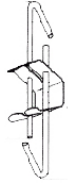
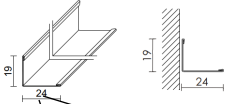


Lubų montavimo planas - pavyzdys

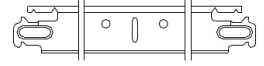
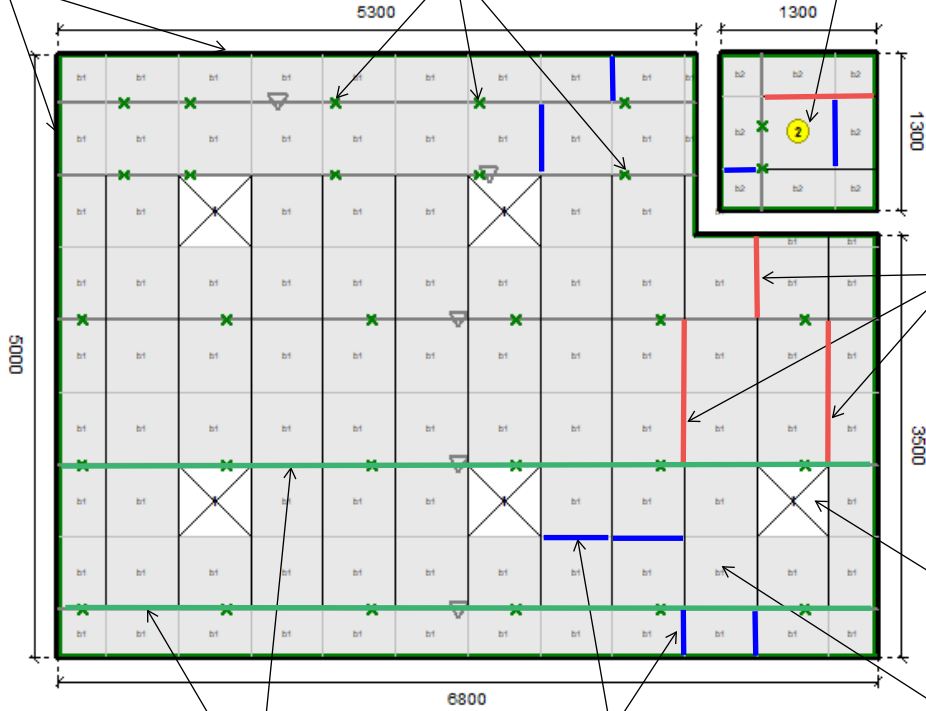
Kampuotis



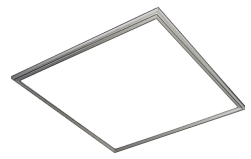
X-lubų pakabos



taškinis šviestuvas

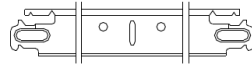


Skersinė konstrukcija T-1200mm

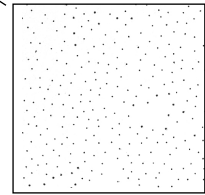


Šviestuvas 60x60cm

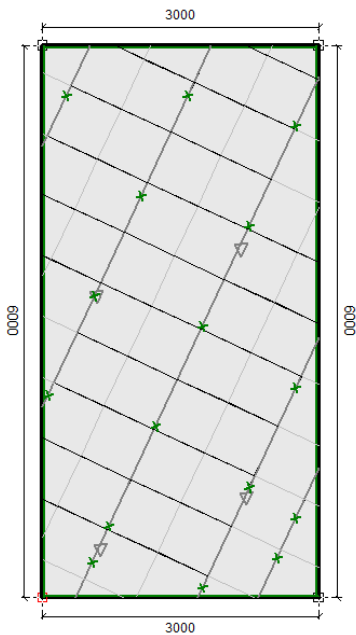
Skersinė konstrukcija T-600mm



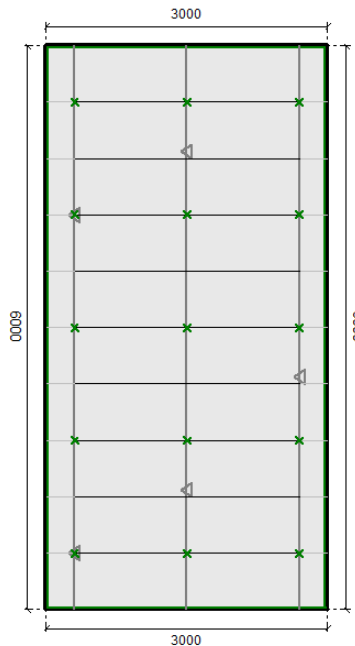
Laikanti konstrukcija T-3000mm



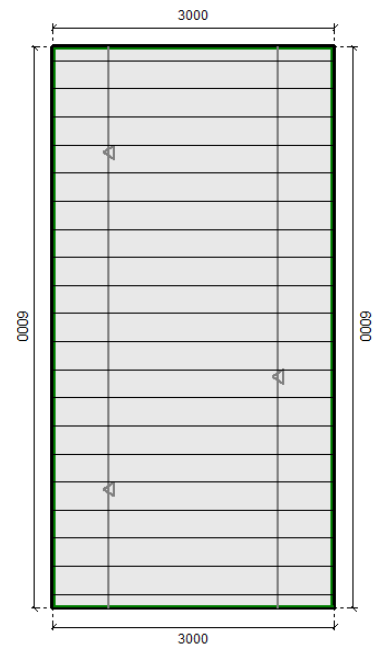
Lubų plokštė 600x600mm



Lubų išdėstymas norimu kampu



Lubų modulis 1200x600mm



Juostinės lubos